

# TARRAGONA

PORT INFRASTRUCTURES







**INTANGIBLE CULTURAL  
HERITAGE OF HUMANITY**

Tarragona, city of  
human towers



**WORLD  
HERITAGE**

Poblet monastery



**WORLD  
HERITAGE**

The roman legacy  
of Tarragona



**INTANGIBLE CULTURAL  
HERITAGE OF HUMANITY**

Mediterranean cuisine



**BIOSPHERE  
RESERVE**

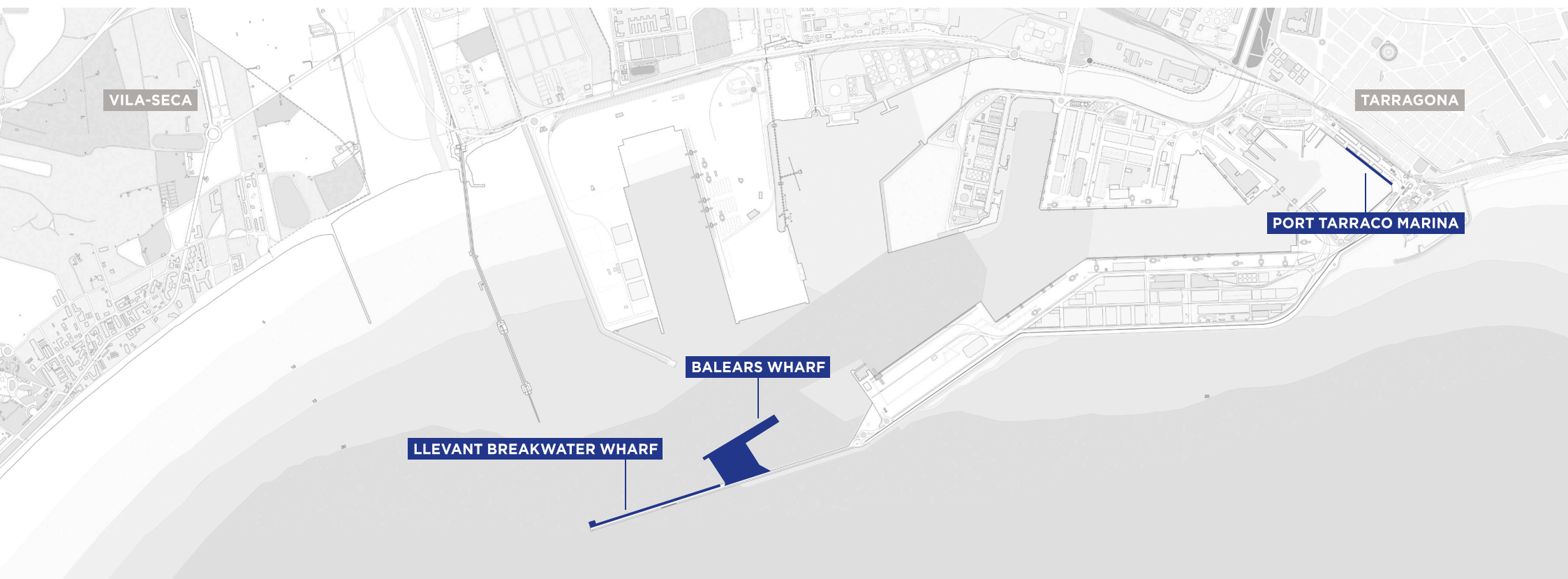
Ebro Delta

# Tarragona, discover a journey in time

The archaeological remains of ancient Roman Tarraco, a World Heritage Site since 2000, is recognized internationally by UNESCO, which recently declared it a site of Outstanding Universal Value, the highest category attainable.

What's more, the area is home to the Monastery of Poblet, a UNESCO World Heritage Site; the Ebro Delta, a UNESCO Biosphere Reserve; and human towers and Mediterranean cuisine, declared UNESCO Intangible Cultural Heritage of Humanity.

In addition, Reus, the hometown of the renowned architect Gaudi, offers visitors exquisite examples of Catalan Modernism, while PortAventura World, with three of Europe's leading theme parks, is a guaranteed fun-filled experience for guests of all ages. The region is also home to producers of outstanding wines and cavas.



## Advantages of mooring in Tarragona

- **EXCLUSIVE QUAY** for cruise ships
- **PASSENGER TERMINAL**
- **EXCLUSIVE ACCESS** through the outer harbour
- **AVAILABILITY OF BERTHS**
- **EASY DOCKING OPERATIONS**
- **EASY PROCESSING** of administrative procedures
- **WAITING AREA** for buses
- **SECURITY PRESENCE** on-site
- **TOURIST INFORMATION** on-board or ashore
- **ACCESS CONTROLLED** to rest of commercial port
- **STRICT CONTROL** of access to dock area



LONG    LAT  
1°14'E    41° 5'N



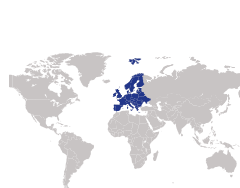
POPULATION  
131,507



SUMMER  
25° C



WINTER  
10° C



EUROPE



SPAIN



CATALONIA



TARRAGONA

# CRUISE FACILITIES

## Balears wharf

### CRUISE TERMINAL BUILDING OPERATIVE IN MAY 2023\*

Available for **turnarounds**, **full services** provided.

	OUTER PIER	INNER PIER
	4 hectares	
• Total surface area		
• Length of berth	461.35 m	267.4 m
• Maximum vessel length overall	362 m	210 m
• Width of berth	200 m	18.4 m
• Height of berth	2.70 m	2.88 m
• Draught	18 m	17 m
• Depth	20 m	
• Bottom	sand, mud	
• Type of bollards	200 Tn every 25 m	200 Tn every 20 m
• Fenders	SC-1600, 25 m apart	C-1400, 20 m apart

\*Project underway, subject to change.



## Commercial services (Balears & Llevant)

### BERTHING

- Fresh water: **available, pipeline every 20 metres**
- Fresh water certificates: **yes**
- Flow rate per hour:  
→ **Llevant B. Berth: 15 TM/H**  
→ **Balears Berth: 30 TM/H**
- Vessel traffic service:  
**Port control channel 74**
- When to call: **12 miles or one hour prior to arrival**
- Bunkering **available**

- All waste disposal facilities: **available**
- Special information required: **call sign, persons on-board, crew, ETA**
- Lowering life boat: **with harbour master permission**
- Mandatory information: **all permissions must be requested 24 hours in advance from harbour master**
- Safety measures must be taken

### TRAFFIC RESTRICTIONS

- Visibility: **1.852 m / 1 mile**
- Daylight restrictions: **none**
- Night restrictions: **no restrictions if docked to starboard**
- Labour availability: **no restrictions**
- Holidays: **no restrictions**

### PORT RESTRICTIONS

- Minimum under keel clearance (UKC): **1 m**
- Maximum air draught: **no limits**
- Maximum allowed displacement: **no limits**
- Maximum gross registered tonnage (GRT): **no limits**

- Maximum wind:  
→ **Llevant B. Berth: no limits**  
→ **Balears Berth:**  
• **Outer pier: in/out 20 knots**  
• **Inner pier: in 15 knots/ out 20 knots**
- Maximum current: **2 knots**
- Tidal restriction: **none**



## Llevant breakwater wharf

- Pier code: **11**
- Length of berth: **707 m**
- Maximum vessel length overall: **no limits**
- Width of berth: **17 m**
- Height of berth: **4.05 m**
- Mean lower low water (MLLW): **4.25 m**
- Mean higher high water (MHHW): **3.85 m**
- Draught: **19 m**
- Depth: **25 m**
- Bottom: **sand, mud, rocks**
- Type of bollards: **100 Tn every 22 m**
- Fenders: **cylindrical, 22 m apart**



## Port Tarraco Marina

A deep-water marina designed to provide superyachts with the highest quality services. Private concession.

- Length of berth (Costa dock): **400 m**
- Maximum vessel length overall: **120 m**
- Width of berth: **35 m**
- Height of berth: **unrestricted**
- Height of quay at low water: **2 m**
- Height of quay at high water: **1.8 m**
- Draught: **6.30 m**
- Depth: **7 m**
- Bottom: **mud**
- Type of bollards: **T-head**
- Fenders: **only on 150m of pier, 40 m between fenders**

- **ISPS code compliance**
- **Authorized economic operator (AEO)**
- **Electrical outlets** up to 1,600 AMPS a 400 V
- 6,600 V / 2,000 VA **electrical connection** to giga yachts
- **Potable water**
- **Wastewater discharge** at each berth
- Waste pickup **MARPOL certificate**
- **Berthing assistance** on arrival and departure
- **Exclusive customer service**
- **Commercial and leisure area**



## Port services

### PILOTS

- Name of pilot authority:  
**Corporación de prácticos de Tarragona**
- Pilot boarding position:  
Ground "A": **41° 04.2' N, 1° 14.2' E**  
Ground "B": **41° 03.7' N, 1° 12.5' E**  
**www.tarragonapilots.com**
- **Pilots are compulsory**
- Pilot pick up speed: **5-6 knots**
- Pilot ladder height above water for pick up: **1 m above water level**

- Distance from pilot station to berth/anchorage: **walking distance**

### MOORING

- No special mooring requirements

### ANCHORAGE

- Anchor position: **see graphic on approaches to Tarragona port**
- Depth: **40 m**
- **Anchorage is sheltered**
- **Swing circle is clear**

### TUGS

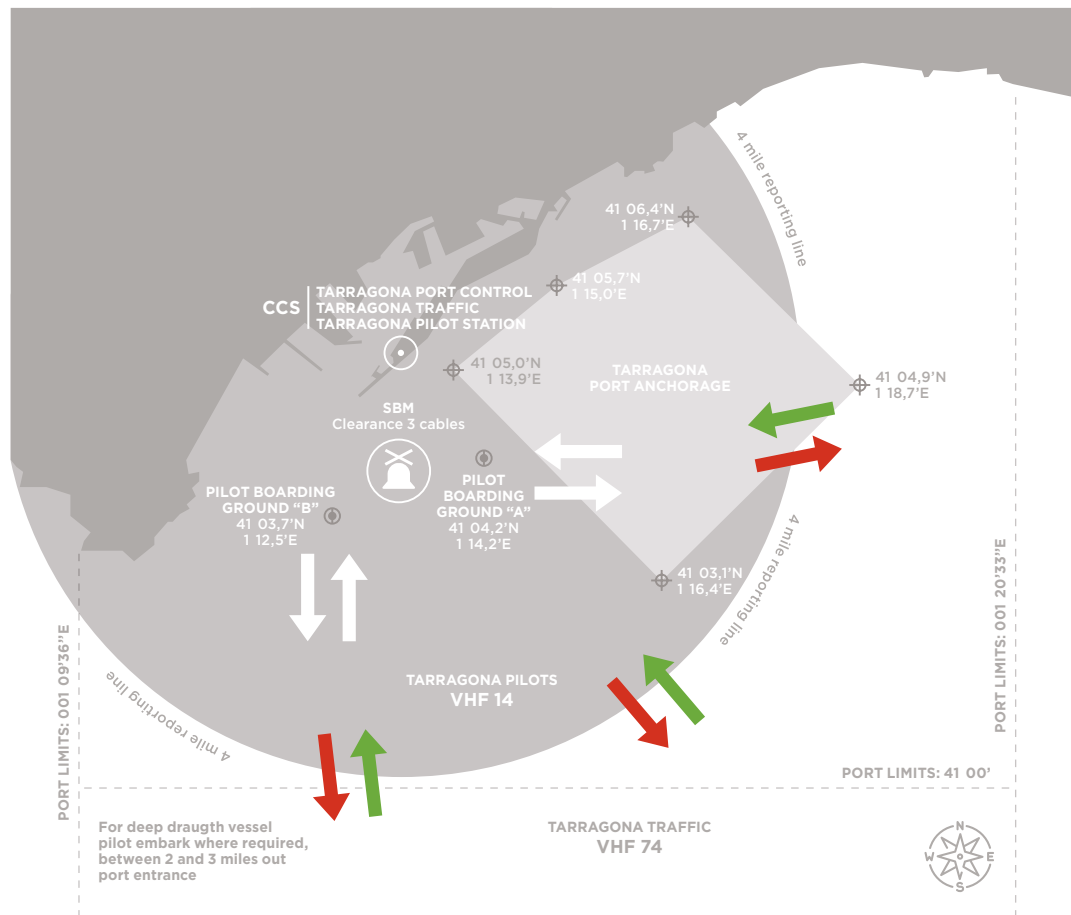
- **TUGS are not compulsory**, depends on berth, draught, length, weather. **No advance notice needed**

### TYPES OF TUGS

Name	Owner	Power used	Power	HP	B/Pull	Line SWL	Length (m)	Beam (m)	Draught (m)
CAMBRILS	RENAVE	Diesel	5.516	5.516	57	172	29,50	11,00	4,00
POBLET	RENAVE	Diesel	5.262	5.262	55	172	29,50	11,00	4,00
ROMULO	REPASA	Diesel	4.896	4.896	65	200	32,00	11,60	5,40
REMO	REPASA	Diesel	4.896	4.896	65	200	32,00	11,60	5,40
GETXO	CARSA	Diesel	4.500	4.500	45	136	29,50	11,00	4'00
GERNIKA	CARSA	Diesel	4.500	4.500	45	136	29,50	11,00	4,00

# Approaches to Tarragona Cruise Port

This diagram is not to be used for navigation



## HOW TO ARRIVE

### BY CAR

Tarragona has excellent road connections to other major cities via an extensive network of world-class highways and motorways.

### BY TRAIN

Tarragona's train station and port connect it to other major cities and towns in the region and in Spain.

## AIRPORTS

Reus at 8 km

El Prat-Barcelona at 82 km

## USEFUL PHONE NUMBERS

Tarragona Traffic  
**+34 977 216 203 (VHF = 16)**

Port Emergency  
**+34 900 229 900**

Port Control  
**+34 977 527 934**

Centre for Municipal  
Emergency Coordination  
**112**

Maritime Rescue and  
Coordination Centre  
**+34 900 202 202**

First Aid Centre  
**+34 977 241 657 / +34 977 241 702**

Occupational Hazard Prevention  
**+34 977 240 190**

Maritime Authority  
**+34 977 240 955**

Customs Authority  
**+34 977 257 450**

Border Inspection Post  
**+34 977 999 014**

Pilots Association  
**+34 977 240 207 (VHF = 14)**

Port Customer Service  
**+34 901 116 658**